

DRAWING NUMBER  
**51/58**

# SOUTHPOINTE PLAT 2

## A PART OF PIPERS GLEN, A P.U.D.

SITUATE IN SECTION 2, TOWNSHIP 46 SOUTH, RANGE 42 EAST,  
PALM BEACH COUNTY, FLORIDA,

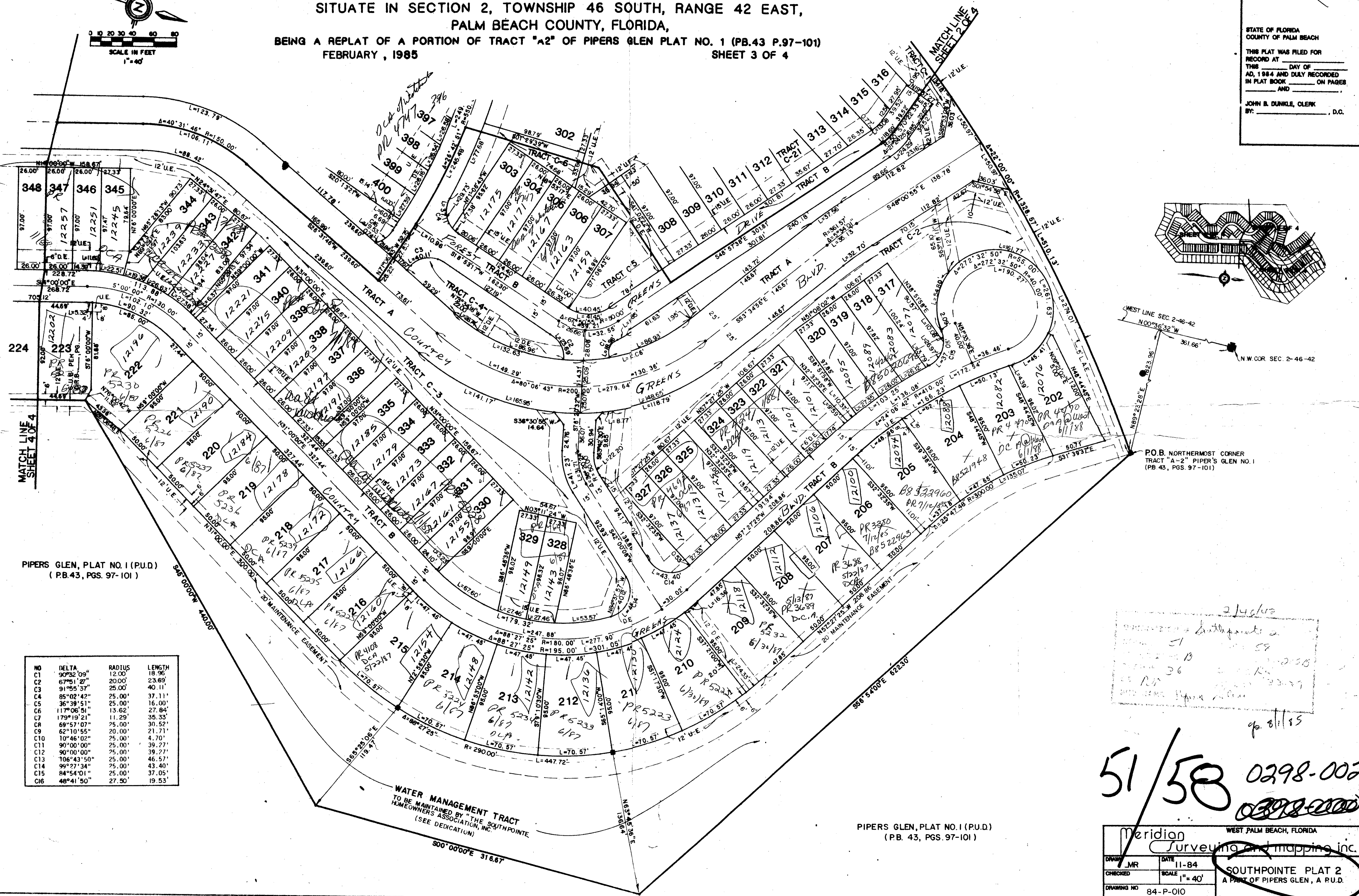
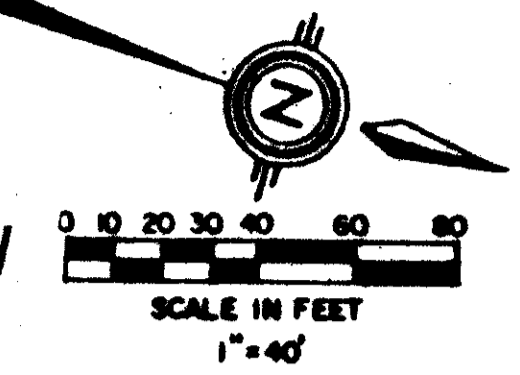
BEING A REPLAT OF A PORTION OF TRACT "A2" OF PIPERS GLEN PLAT NO. 1 (PB.43 P.97-101)  
FEBRUARY, 1985 SHEET 3 OF 4

**58**  
51  
STATE OF FLORIDA  
COUNTY OF PALM BEACH  
THIS PLAT WAS FILED FOR  
RECORD AT \_\_\_\_\_ DAY OF \_\_\_\_\_  
AD, 1984 AND DULY RECORDED  
IN PLAT BOOK \_\_\_\_\_ ON PAGES  
\_\_\_\_\_ AND \_\_\_\_\_  
JOHN B. DUNKLE, CLERK  
BY: \_\_\_\_\_, D.C.

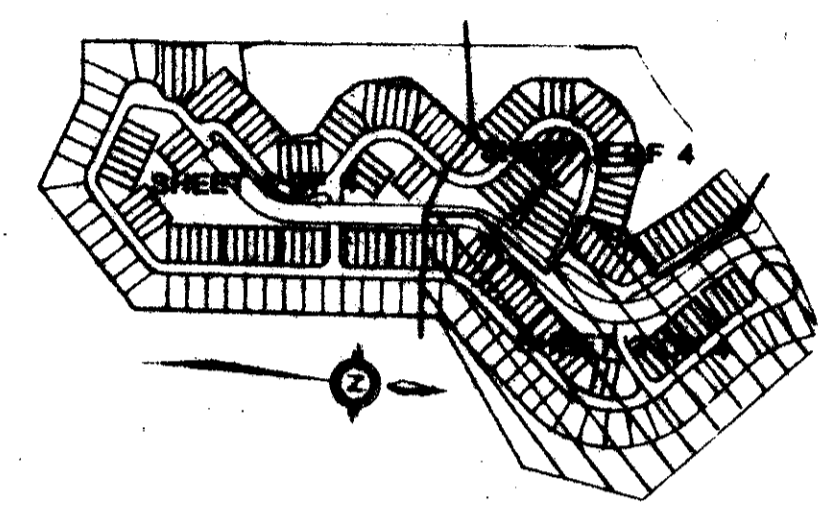
DRAWING NUMBER

DRAWING NUMBER

DRAWING NUMBER



NO	DELTA	RADIUS	LENGTH
C1	90°32'09"	12.00'	18.96'
C2	67°51'29"	20.00'	23.69'
C3	91°55'37"	25.00'	40.11'
C4	85°02'42"	25.00'	37.11'
C5	36°39'51"	25.00'	16.00'
C6	117°06'51"	13.62'	27.84'
C7	179°19'21"	11.29'	35.33'
C8	69°57'07"	25.00'	30.52'
C9	62°10'55"	20.00'	21.71'
C10	10°46'02"	75.00'	4.70'
C11	90°00'00"	25.00'	39.27'
C12	90°00'00"	25.00'	39.27'
C13	106°43'50"	25.00'	46.57'
C14	99°27'34"	25.00'	43.40'
C15	84°54'01"	25.00'	37.05'
C16	48°41'50"	27.50'	19.53'



*Handwritten notes:*  
214/102  
Southpointe a  
51  
36  
8/1/85

**51/58** 0298-002  
~~0298-000~~

Meridian Surveying and Mapping Inc.  
WEST PALM BEACH, FLORIDA

DRAWN	MR	DATE	11-84
CHECKED		SCALE	1"=40'
DRAWING NO	84-P-010		

**SOUTHPOINTE PLAT 2**  
A PART OF PIPERS GLEN, A P.U.D.

PIPERS GLEN, PLAT NO. 1 (P.U.D.)  
(P.B. 43, PGS. 97-101)